



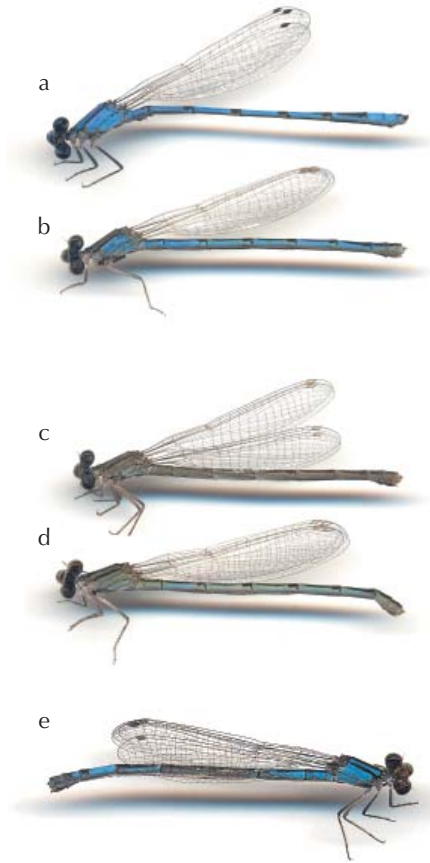
Colour plate I: *Somatochlora borisi* — (a) premature female from the Diavolorema River near Mikron Dherion, NE Greece, 6 May 2004; (b) mature female from the same locality, 1 June 2003. The abdominal pattern with extensive yellow is typical of this species. Photos by Jean-Pierre Boudot.



Colour plate II: *Idomacromia jilliana* sp. nov. — (a) holotype female; (b) type locality at Ruhija in Uganda, Kabale District, Bwindi Impenetrable National Park (alt. 2,100 m) – view of Mubwindi Swamp and the Virunga Volcanoes, with the collecting site in the forest to the right of the swamp. Scan and Photo by Klaas-Douwe Dijkstra.



Colour plate III: Two typical zygopteran openwing perchers — (a) *Griseargiolestes griseus* (Megapodagrionidae), Govett's Leap, Blue Mountains National Park, New South Wales, Australia, 11 December 1998; (b) *Diphlebia nymphoides* (Diphlebiidae), Megalong Creek at Old Ford Reserve, New South Wales, Australia, 11 December 1998. Photos by Dennis Paulson (a) and Netta Smith (b). See also cover photo.



Colour plate IV: Color variation of *Enallagma civile* and examples of heterospecific pairing — (a) male; (b) andromorphic female; (c) heteromorphic female; (d) intermediate type female; (e) the other study species in comparison: andromorph female of *E. aspersum*, a monomorphic species; (f) intrageneric mistake: male of *E. carunculatum* in tandem with female of *E. basidens*; (g) another intrageneric mistake: male of *Platycnemis pennipes* accompanying an ovipositing female of *P. acutipennis*; (h) intergeneric mistake: male of *Ischnura elegans* in tandem with female of *Erythromma lindenii*; (i) mistake between different families: male of *Coenagrion ornatum* in tandem with female of *Platycnemis pennipes*. Scans and photos by Tom Schultz (a-e), Dustin Huntington (f) Mathias Lohr (g) and Bernd Kunz (h, i).